

zenduit

zenduONE

# zenCAM<sub>LITE</sub>



## AI-Powered Dashcam for Safer, Smarter Fleets

ZenCAM enhances safety and reduces risks with industry-leading AI accuracy, detecting unsafe driving in real-time for proactive coaching and fleet-wide visibility.



WORK  
MANAGEMENT



INDOOR  
TRACKING



DASHCAMS



MAINTENANCE



DRIVER APPS

zenduONE

# zenCAM LITE

## Dual Dash ADAS AI Cam with 1080P Recording Capabilities



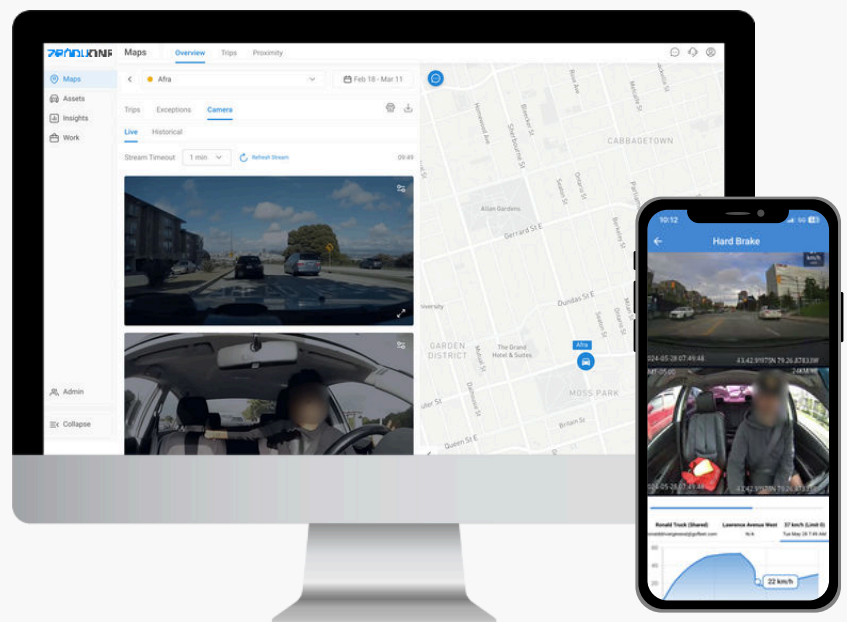
\* Coming Soon

## Tailor-Made Features

Create custom alerts to review safety practices on the road with video incident management services available.

AI-powered telematics solutions to increase safety of drivers and protect assets.

Leverage video footage when an incident is reported to see true events of what happened. Conduct virtual ride along with driver and enable in-cab coaching with real-time video streams. Detect unsafe driving behavior with AI detection and automatic alerts of speeding

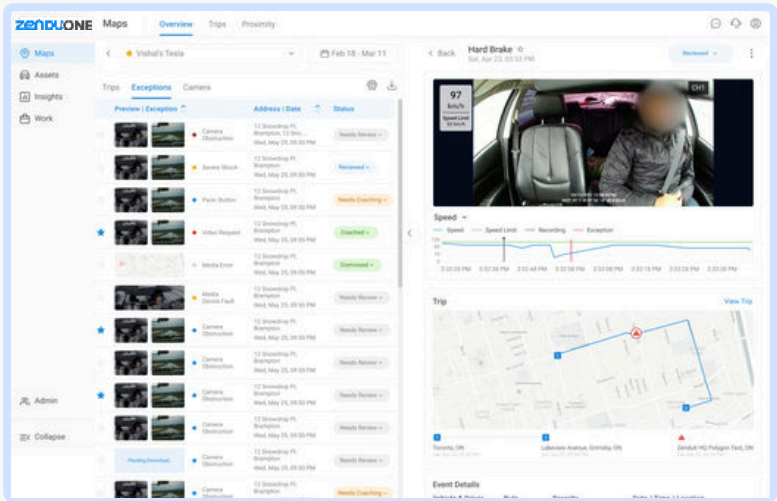


# BENEFITS



## Hyperlapse View

Quickly review a whole day's timeline using the hyperlapse view feature. This replay mode allows managers and supervisors to gain comprehensive visibility of operations over the entire day in a fraction of the time. river-facing footage in High Definition to ensure Driver Safety



## Driver Application

Empower drivers and managers to review flagged videos through the mobile app. They can conveniently comment on specific incidents, fostering better communication and understanding between drivers and supervisors.

## Wi-Fi Hotspot

Utilize the camera's built-in Wi-Fi hotspot to connect multiple devices directly. This capability reduces the need for additional network hardware, saving costs and simplifying connectivity for mobile teams.



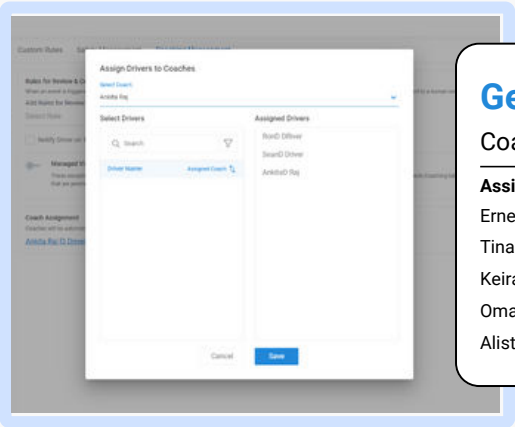
# HOW IT WORKS?



## 01

### Setup & Hierarchy

Supervisors are strategically assigned to manage specific drivers, forming a well-defined hierarchy. The system generates a driver scorecard, providing supervisors with comprehensive insights into driver performance metrics. The setup establishes clear coaching relationships and ensures managers have the tools to monitor driver progress effectively.



#### Georgia Smith

Coach #3321

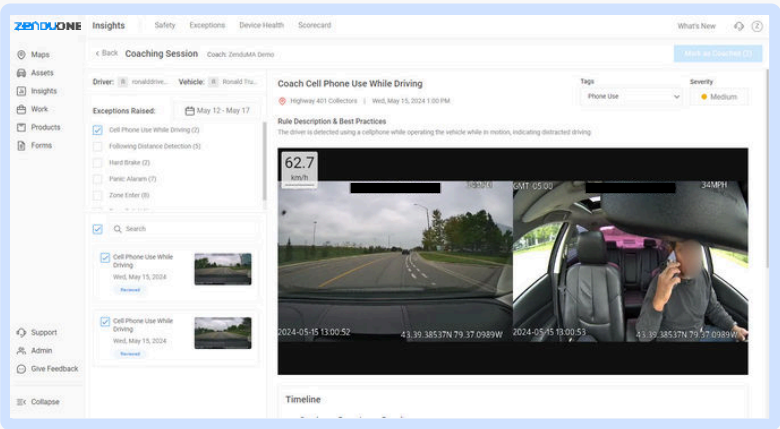
##### Assigned Drivers

Ernest Barrera	#321
Tina Molina	#431
Keiran Fowler	#433
Omari Holt	#439
Alistair Lloyd	#444

## 02

### Coaching Sessions

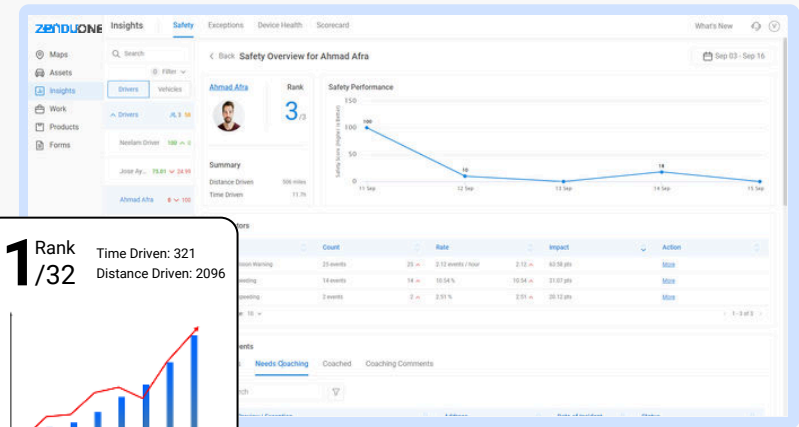
Supervisors conduct coaching sessions based on scorecard data and behavior analytics. During these sessions, managers provide actionable feedback to help drivers improve performance. A streamlined interface simplifies the process, allowing managers to monitor progress and tailor coaching to individual needs.




## 03

### Insights & Rewarding Performance


The system generates actionable insights to recognize outstanding driver performance. Managers use these insights to identify and reward drivers who consistently excel. A dedicated reward mechanism encourages healthy competition, contributing to a safer and more efficient fleet operation.




INCLUDED IN THE BOX




ZenCAM LITE




Mounting Bracket




Driver Lens Cover



Power Cable



Hardware Cable



16 PIN OBD  
Connection Cable

HOW TO INSTALL

01

Hardwire Installation or Plug-and Play

The camera system is designed for easy installation via hardwired or optional OBD power cable.

02

Quick Setup via MyInstallHub App

The MyInstallHub app streamlines installation, enabling users to quickly install and configure the camera system. With step-by-step guidance and automatic database synchronization, users can effortlessly complete the setup process.

03

Automated Device Addition & Notifications

Once installed via the app, the camera device is automatically added to the database, ensuring seamless data integration. Customers receive automated notifications after each installation to verify successful setup.

PRODUCT SPECIFICATION

Audio	Built-in MIC
Field of View	Driver Facing: 170° view of cabin Road Facing: 106° view of road
Network band	WIFI: 2.4 G 4G: LTE: B2/B4/B5/B12/ B13/B14/B66/B71 WCDMA: B2/B4/B5
Power Supply	12-24 V
Power Consumption	≤ 12W
Storage	2x512GB
Sensor	Driver Facing: 1/2.9" 2MP CMOS Sensor Road Facing: 1/2.9" 2MP CMOS Sensor