

zenBEACON

Smart Tracking, Instant Insights.

ZenBEACONS provide seamless asset tracking and real-time monitoring using Bluetooth Low Energy (BLE) technology.

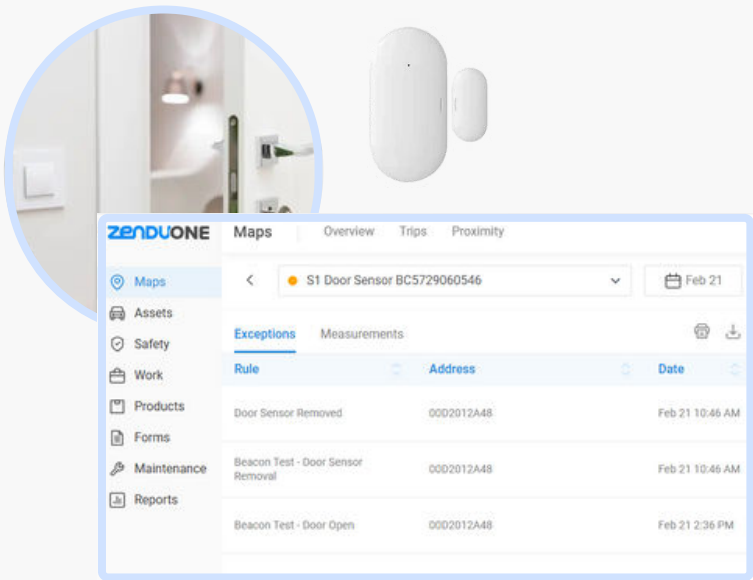
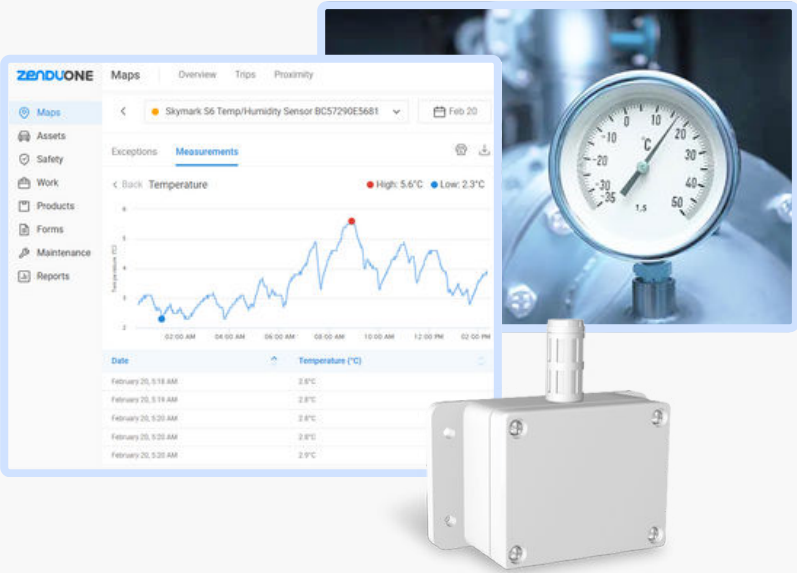


BENEFITS



Real-Time & Historical Measurements

Monitor your operations in real-time and review historical data for a comprehensive understanding of beacon activity, ensuring accurate tracking and insightful data for better decision-making.

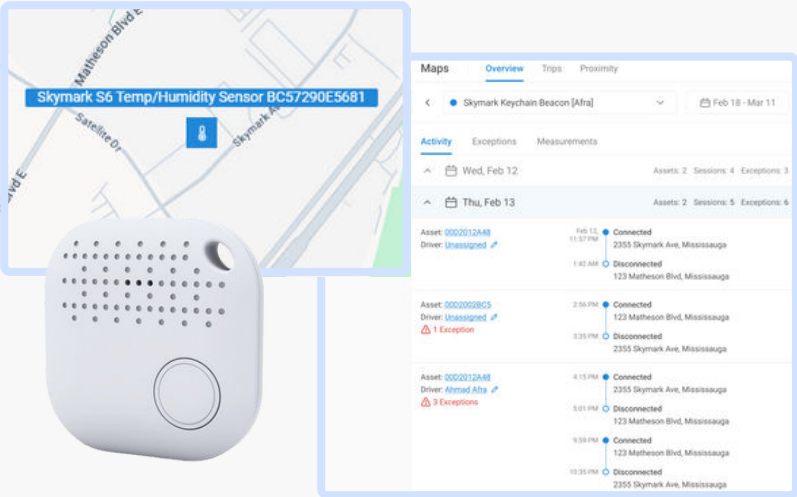


Rule Triggers & Exceptions

Leverage custom rule triggers to automate actions based on beacon data, and easily address any exceptions that arise, enhancing operational efficiency and responsiveness.

Activity Logs & Location Tracking

Keep track of beacon activity with detailed logs and precise location tracking, offering visibility into asset movements and connection status—for optimized resource management.



BEACON CATALOG



ZenID

Keychain Beacon with Trigger Button

- Automatic Driver Identification
- Attendance Tracking
- Passenger Counting
- Accessible Panic Button for Emergencies



ZenDoor

Door Sensor

- Vehicle Security
- Cargo Handling
- Tamper Detection
- Environmental Monitoring



ZenMini

Ultra-Small Beacon Tag

- Tool Tracking
- Equipment Tracking
- Item Tracking



ZenClicker

Panic Button Beacon

- Driver Safety & Emergency
- Warehouse Security
- Healthcare Facilities



ZenTemp

Waterproof Temperature and Humidity Sensor

- Cold Chain Monitoring
- Warehouse Conditions
- Greenhouse Management
- HVAC System Monitoring



ZenTemp+

Long-Range Temperature and Humidity Sensor

- Cold Chain Monitoring
- Warehouse Conditions
- Greenhouse Management
- HVAC System Monitoring

PRODUCT SPECIFICATIONS

	ZenID	ZenDoor	ZenClicker	ZenMini	ZenTemp	ZenTemp+
Dimensions	36 x 36 x 5.6 mm	52 x 26 x 14.5 mm (Body) 25 x 12 x 14 mm (Small piece)	50 x 13 mm	37.6 x 24 x 5.3 mm	88 x 58 x 35 mm	94 x 38 x 18 mm
Weight	10 g	18 g	30 g	7g	103 g	42 g
Battery Type	Replaceable 3V 210mAh CR2032 coin battery				3.6V 2600mAh ER14505 Lithium battery	
Battery Life	18 month lifespan				8 year lifespan	
Transmission Range	10-30m indoors, 50-80m outdoors				10-30m indoors, Up to 300m outdoors	30-100m indoors, Up to 900m outdoors
Waterproof Rating	IP44				IP67	IP63
Operating Temperature Range	-20°C to 65°C (-4°F to 149°F)				-40°C to 70°C (-40°F to 158°F)	
Sensor Accuracy	Temp: ±3°C				Temp: ±0.4°C Humidity: ±4%	